

# Hematology

## **COURSE PACKAGE**



This seven-module course package is designed to support learners interested in further developing their understanding of how to diagnose and suggest treatment for different hematological conditions with the support of peripheral blood smears.



The CENTER for  
EDUCATIONAL TECHNOLOGIES

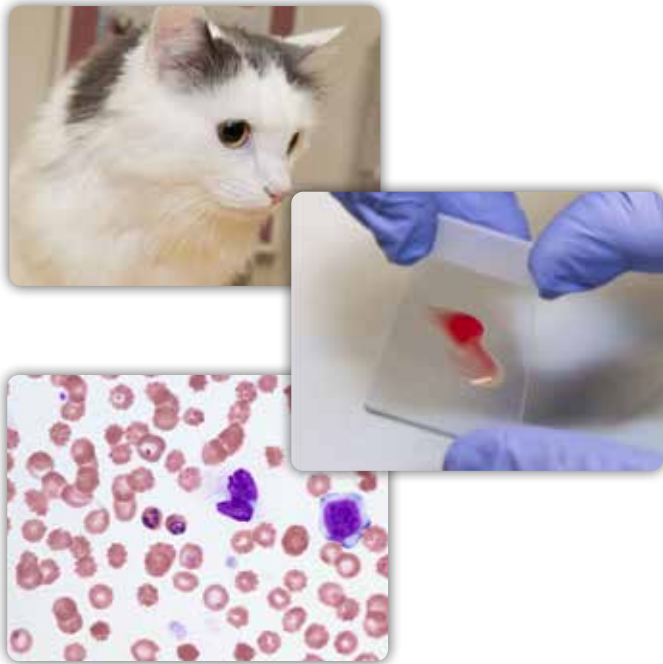


TEXAS A&M UNIVERSITY

**Veterinary Medicine  
& Biomedical Sciences**

# Accelerate Student Learning

Bleeding is a common clinical presentation in companion animals, and many practitioners struggle to interpret hematologic data and formulate appropriate diagnostic plans for affected patients. Using real-world case studies, learners will recognize the major causes of bleeding, develop a diagnostic and treatment plan, and select and administer appropriate blood products for the patients. An additional interactive learning module will discuss the basics of how to prepare and examine a peripheral blood smear, with a focus on important erythrocyte abnormalities that can help shape differential diagnoses in an emergency setting.



## What's Included

### Case Studies

Hematology (*Contact time: 3.0 hours*)

- Barkley - Iron Deficiency Anemia
- Andie - Immune-mediated Hemolytic Anemia
- Sydney - Immune-mediated Thrombocytopenia
- Finny - Blood Loss Anemia
- Cuzco - Mycoplasma haemofelis
- Freddie - Ehrlichia canis

### Learning Module

Evaluating Blood Smears and Analyzing Erythrocyte Morphology (*Contact time: 1.0 hour*)

### Instructor Tools

All modules include an assessment pack that can be utilized to support formative or summative assessment of students.

## Audience & Delivery

Designed to complement: Small Animal Medicine, Hematology, Emergency Medicine and Clinical Rotations

Web-based HTML5 content streams directly to students via password protected learning management system. Runs on PC, MAC, and Tablet-devices.

## About the Authors

**Audrey Cook**, BVMS, DABVP (Feline), DACVIM (SAIM), DECVIM

**Jessica A. Hokamp**, DVM, PhD, DACVP (Clinical Pathology)



**The Center for Educational Technologies**  
Located at the College of Veterinary Medicine  
& Biomedical Sciences at Texas A&M University  
1-979-458-8450 ■ [WWW.TAMUCET.ORG](http://WWW.TAMUCET.ORG)

For more information or to try a demo,  
connect with us at **CET@cvm.tamu.edu**

# How to Access this Content

1

## Fill out our Contact Form

If you are interested in accessing any of the Center for Educational Technologies' educational resources, please fill out the form at [www.tamucet.org/contact](http://www.tamucet.org/contact).

2

## Connect with our Team

After receiving your information through the Contact Form, a member of the Center for Educational Technologies team will connect with you to provide more information and give you access to a demo of the requested resources.

Facts About our Educational Resources:

- Educational Resources are available for license via a 12-month subscription license agreement for an unlimited number of faculty and students.
- All resources are web-based, managed through the Center for Educational Technologies' learning management system, and accessible across multiple devices. No download necessary!

3

## License Agreements and Payments

At the end of the demo period, a license agreement would be signed by both institutions and payment would be submitted.

FAQs About License Agreements and Payments:

**Q:** What is a subscription license agreement?

**A:** A legal agreement between two parties to access learning modules that Texas A&M owns the intellectual property to. All learning modules are licensed for a set fee as outlined on the [tamucet.org](http://tamucet.org) website.

**Q:** How long is a subscription license agreement?

**A:** License agreements are for 12-months.

**Q:** How do I renew a subscription license agreement?

**A:** Annual renewal reminders are emailed to licensees prior to the license agreement termination date. Licensees may also request renewals via email to the Center for Educational Technologies at [cet@cvm.tamu.edu](mailto:cet@cvm.tamu.edu)

**Q:** What happens if I choose to terminate my subscription license agreement prior to the end of the 12-month period?

**A:** A thirty (30) days written notice prior to the end of the then-current term of its intent not to renew is required.

4

## Set-up and Support

The Center for Educational Technologies will set up your unique institution URL with your custom branding and trademark. Login credentials and account setup instructions will be provided for your students and faculty. HelpDesk Support will be provided for the length of the license agreement

5

## Login and Begin Learning!

